



manila travelers' tropical transparency

The renewed Manila Travelers (MTA) serviced apartments shall uphold Filipino maximalism at its most minimalist as streamline moderne is melded with the Filipino sensibilities of warmth, rawness, and vibrant hospitality.

Here FIJI studio demonstrates the motherly and relentless caring hospitality unique to Filipino hosts, but in the 21st century wherein there comes a boldness in the urban context that has profoundly made this evolve. As a traveler whether from abroad or just the next province, engaging in adventure and going home to wondrous comfort is encouraged and inspired by the new architectural interior design of MTA.





FOURTH FLOOR PLAN 3 SCHEMES

STANDARD 'A'

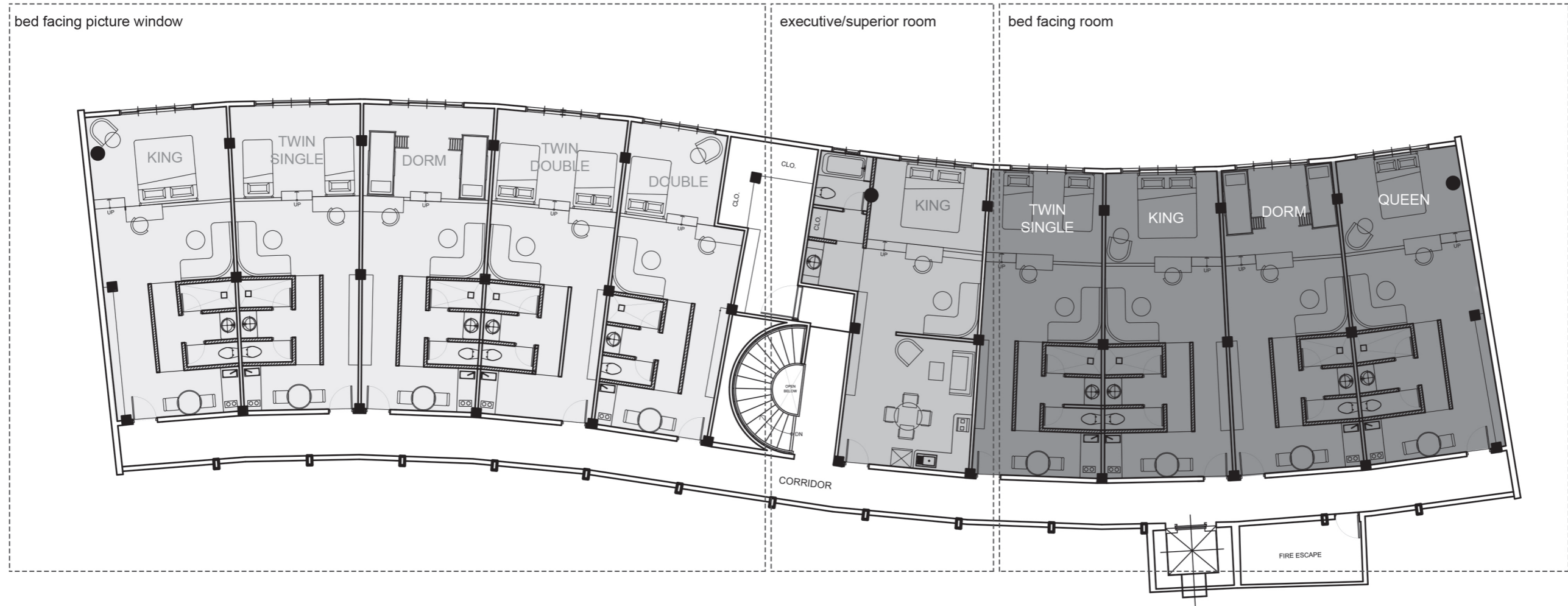
bed facing picture window

SUITE

executive/superior room

STANDARD 'B'

bed facing room



uniquely typical layout

Each unit is distinct, yet also typical in layout as MTA's 10 units are required to be serviced regularly. Key to this layout is not only the openness found in Filipino vernacular home plans, but also its practical need for seamless serviceability.

As for being truly remembered (remarkability) as innovative, 3 schemes are provided with a different type of bedspace configurations for **STANDARDS A & B** and the single executive/superior **SUITE**.

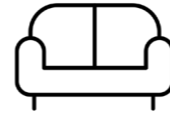




SPACE PROGRAMMING ZONE & FUNCTION

The typical open plan within each room sweetly progresses from one zone to another. Flexibility is demonstrated through ease in circulation. There are no closed spaces here.

The character of the room shall be defined by the material/texture specifications that then directly influence what the guests experience and remember in the space as uniquely MTA.



sala

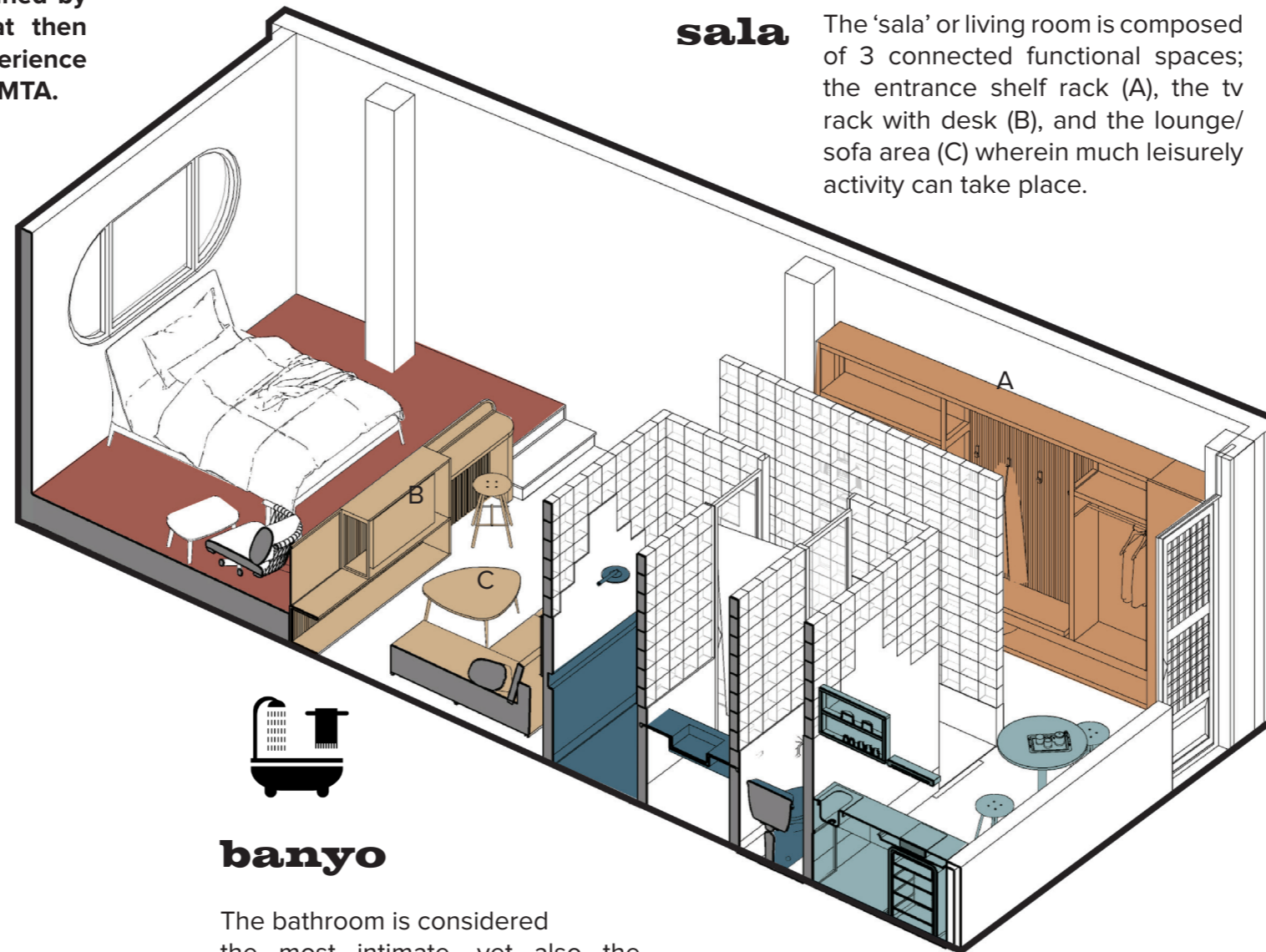
The 'sala' or living room is composed of 3 connected functional spaces; the entrance shelf rack (A), the tv rack with desk (B), and the lounge/sofa area (C) wherein much leisurely activity can take place.



silid - tulugan

The main bedspace is configured to be separate, yet one with the entire room. The elevated platform highlights the area as the most comfortable zone, as it is in every home.

It is divided not by a wall, but a custom designed furniture piece that doubles as a TV rack and desk space for business travelers.



banyo

The bathroom is considered the most intimate, yet also the most public part of a Filipino home, thus as a central and 'transparent' feature, it is segmented into an 3 main areas (bath, lavatory, and toilet) with its own hallway, shrouded in glassblocks; an ode to the building's historic streamline moderne style.

This allows for multiple users to use different parts simultaneously.



hapag - kainan

As one enters the room, what greets you first is the dining area with kitchenette. This area immediately calls to mind the act of eating or 'Have you eaten?', perhaps after a long day of travel/exploration.

Perhaps a nice iced pineapple juice or a cup of kapeng barako with Lola's biscocho is already set for you at the table.



BESPOKE INSTALLMENTS FURNITURE & WINDOWS

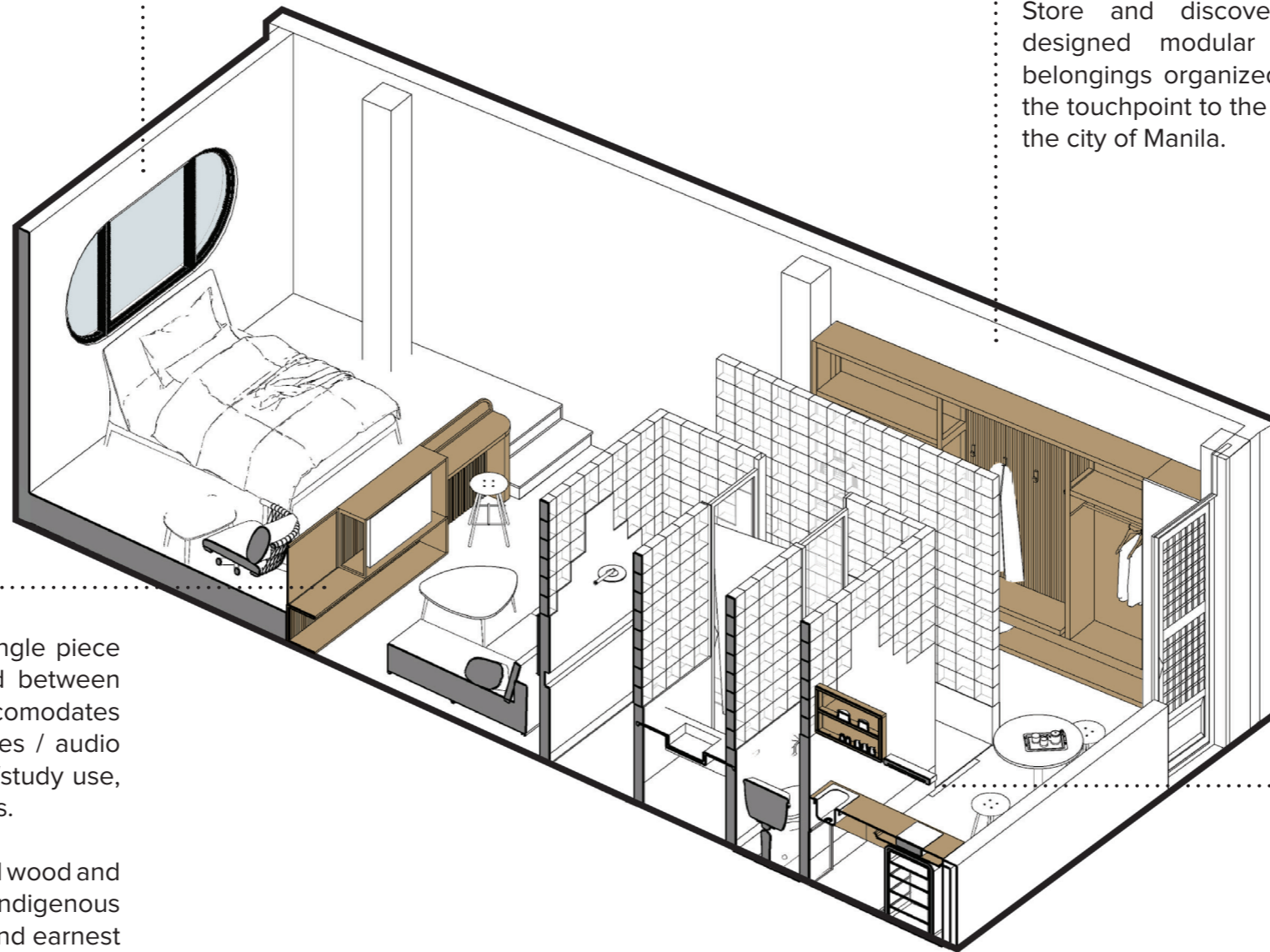
Uniqueness through bespoke local craft furniture is highlighted here wherein dual / multiple activities can take place simultaneously, not to mention an installment as what would have been a porthole window, but instead a more subtle nod to the building's streamline moderne style as a curvilinear picture window to city to be explored.

view & wonder

As an ambiguous focal point of the room, the curvilinear window must highlight the view, more than itself, which is in itself interesting as well, albeit less stand-offish than a porthole window.

discover & store

Store and discover through the custom-designed modular shelf meant to keep belongings organized and secure and also as the touchpoint to the history of the building and the city of Manila.



work & play

Work and play can be united in a single piece of furniture that also asks a divided between bedspace and living area. This accommodates a TV rack, shelfspace for boardgames / audio visual and a desk space for business/study use, can also be a boudoir for other guests.

To be used here can be reclaimed local wood and weave patterns from vernacular and indigenous crafts that can be a point of interest and earnest aesthetic.

eat & celebrate

Cook, eat, or celebrate as the Filipinos always do with this small kitchenette and dining area composed of a 2-3 seater dining table, mini-fridge, kitchen sink, and induction stove.

The minimal size of the kitchenette allows for lower cost in construction and easier serviceability, while still allowing guests to have their own space to cook and feel at home in the room.



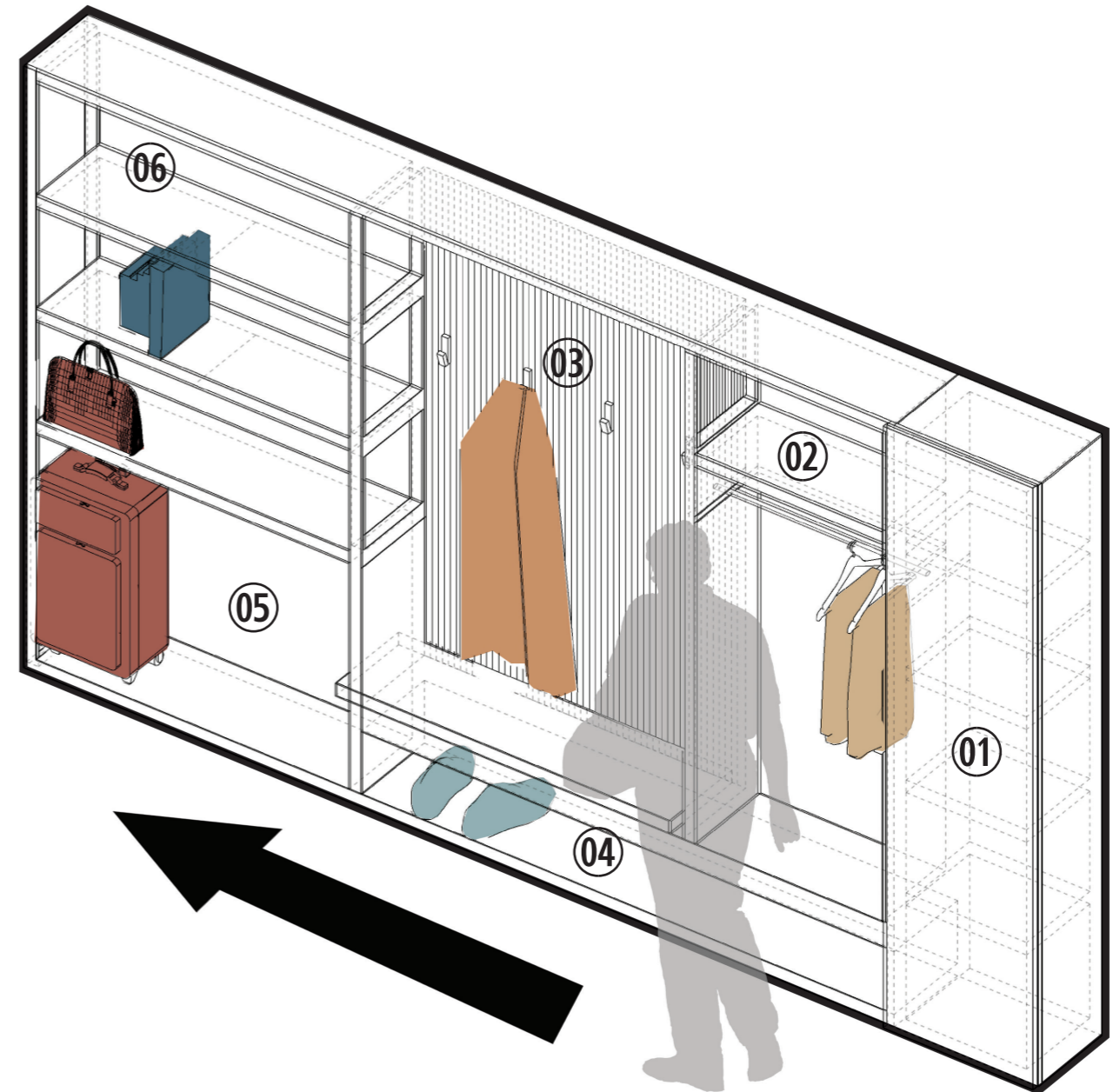
the greeting shelf

This custom-designed modular 'greeting shelf' is meant to represent the antithesis to the usually musty and unused closet space provided by standard hotel room. It immediately greets the guest as it lines the main hallway that leads to the living and bed spaces.

With an open shelf and storage space, it is easily serviceable/maintained as well as constantly appreciated by guests with the opportunity to display mementoes, travel books, or picture frames that introduce the history/spirit of the place as the warm and caring host --- as if one walks through one's grandparents' ancestral home or to set foot in a new friend's home for the first time, allowing wonder to grow.

The progression from the entrance door is meant to assist the guest through the phases of 'unpacking' as follows:

- ① MIRROR / CLOSED CABINET SECTION FOR VAULT OR VALUABLES
- ② UPPER SHELF FOR CARRY-ONS OR VALUABLES & HANGER FOR READY-TO-WEAR CLOTHES
- ③ HOOKS FOR COATS OR TRAVEL SLING BAGS
- ④ DESIGNATED SHOE RACK
- ⑤ MEDIUM-TO-LARGE LUGGAGE STORAGE SPACE
- ⑥ UPPER SHELVES FOR MTA BOOKS OR MEMENTOES TO BE DISPLAYED / ART

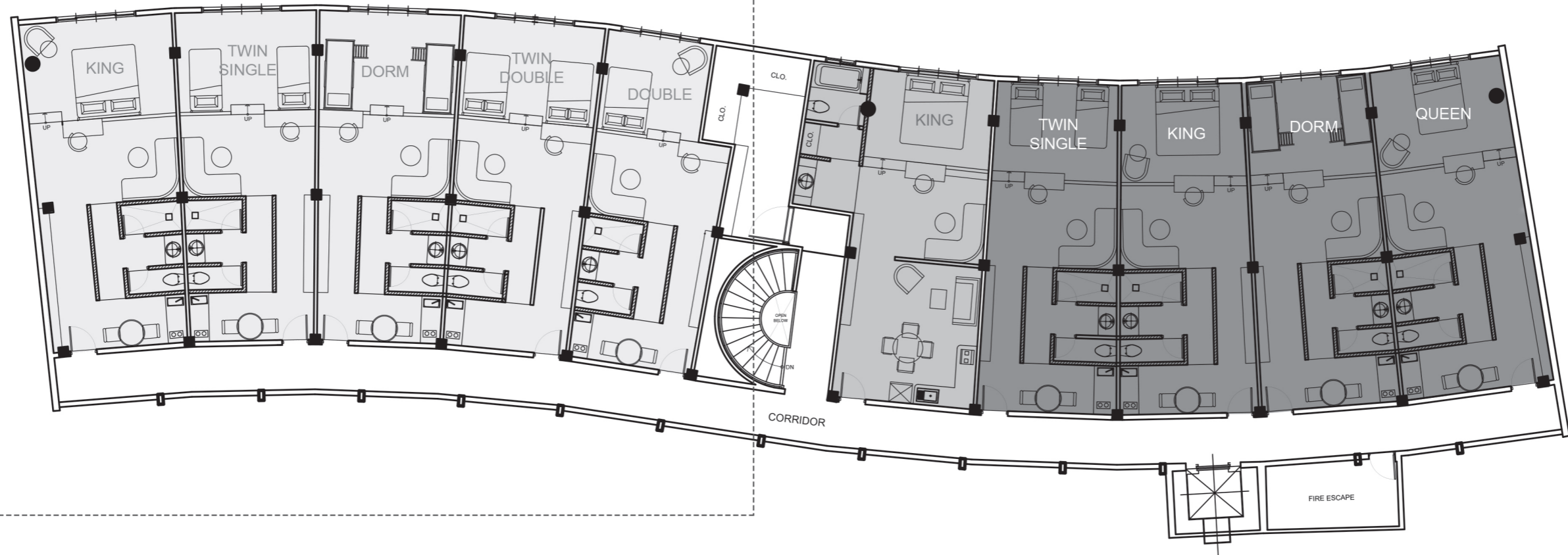




**F O U R T H
F L O O R P L A N
S T A N D A R D ' A '**

STANDARD 'A'

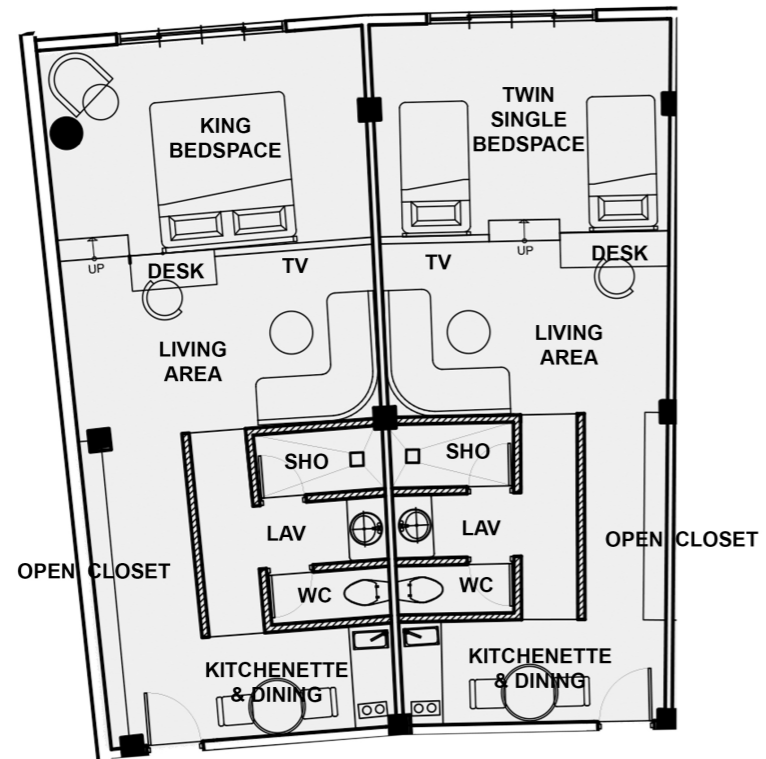
bed facing picture window



SCALE 1:150 M



FLOOR PLAN
STANDARD 'A'



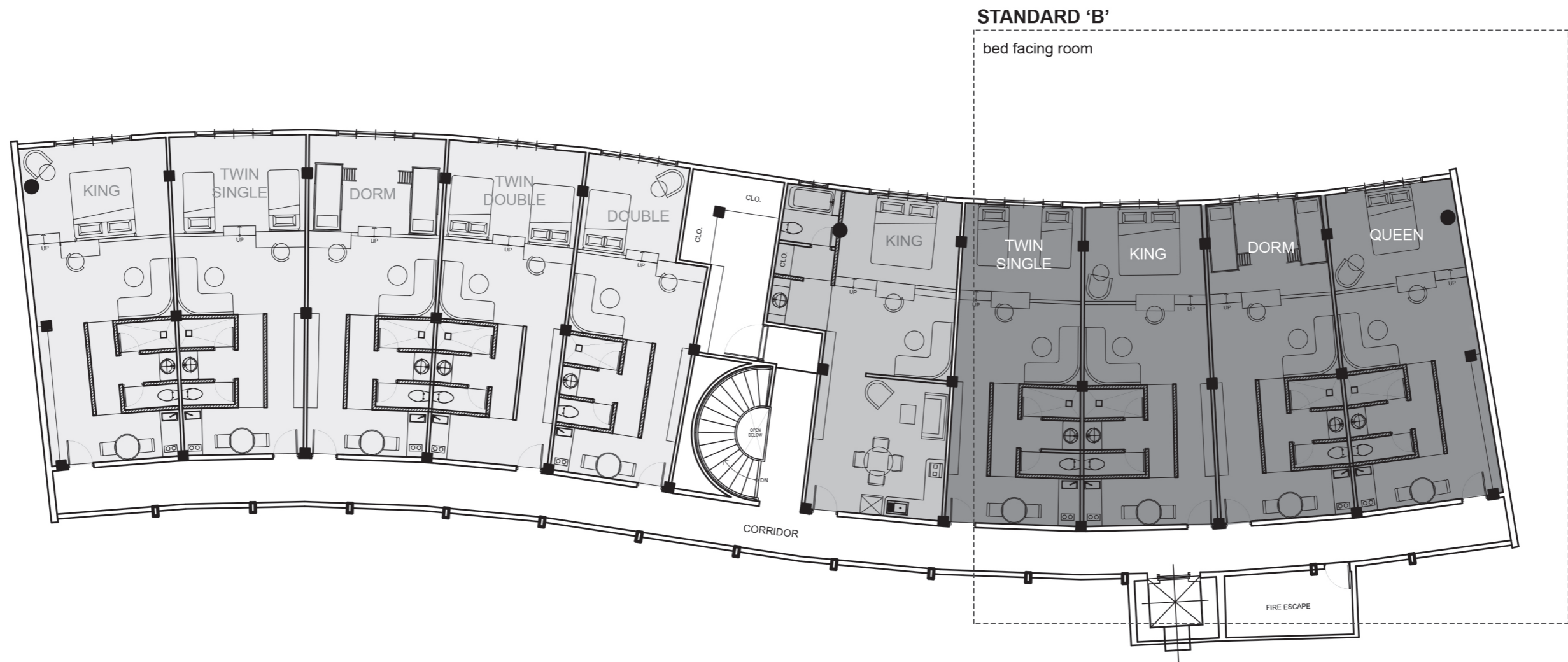
twin single



king



FOURTH FLOOR PLAN STANDARD 'B'

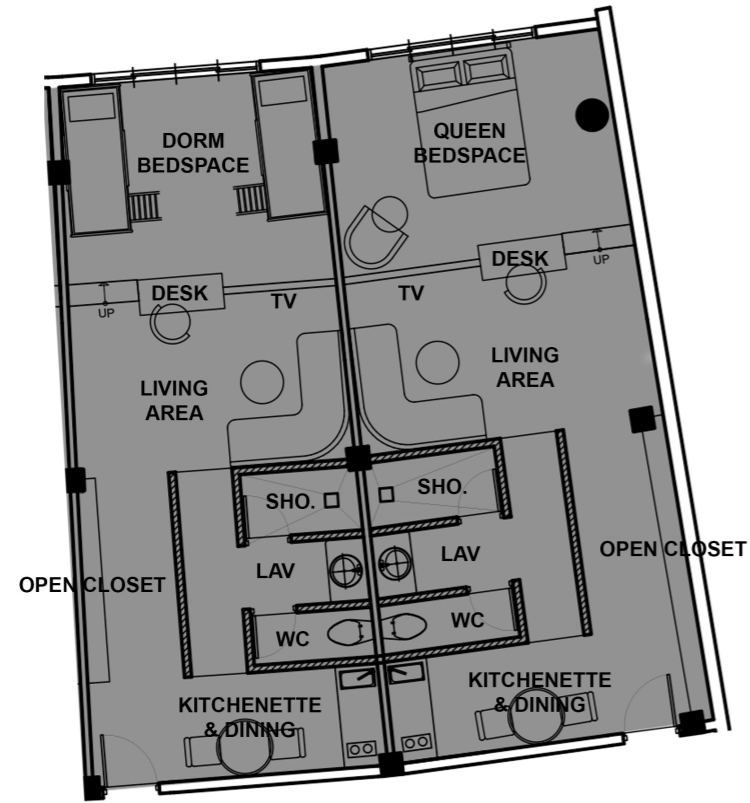


0 1 3 6 15 M

SCALE 1:150 M



FLOOR PLAN
STANDARD 'B'



queen



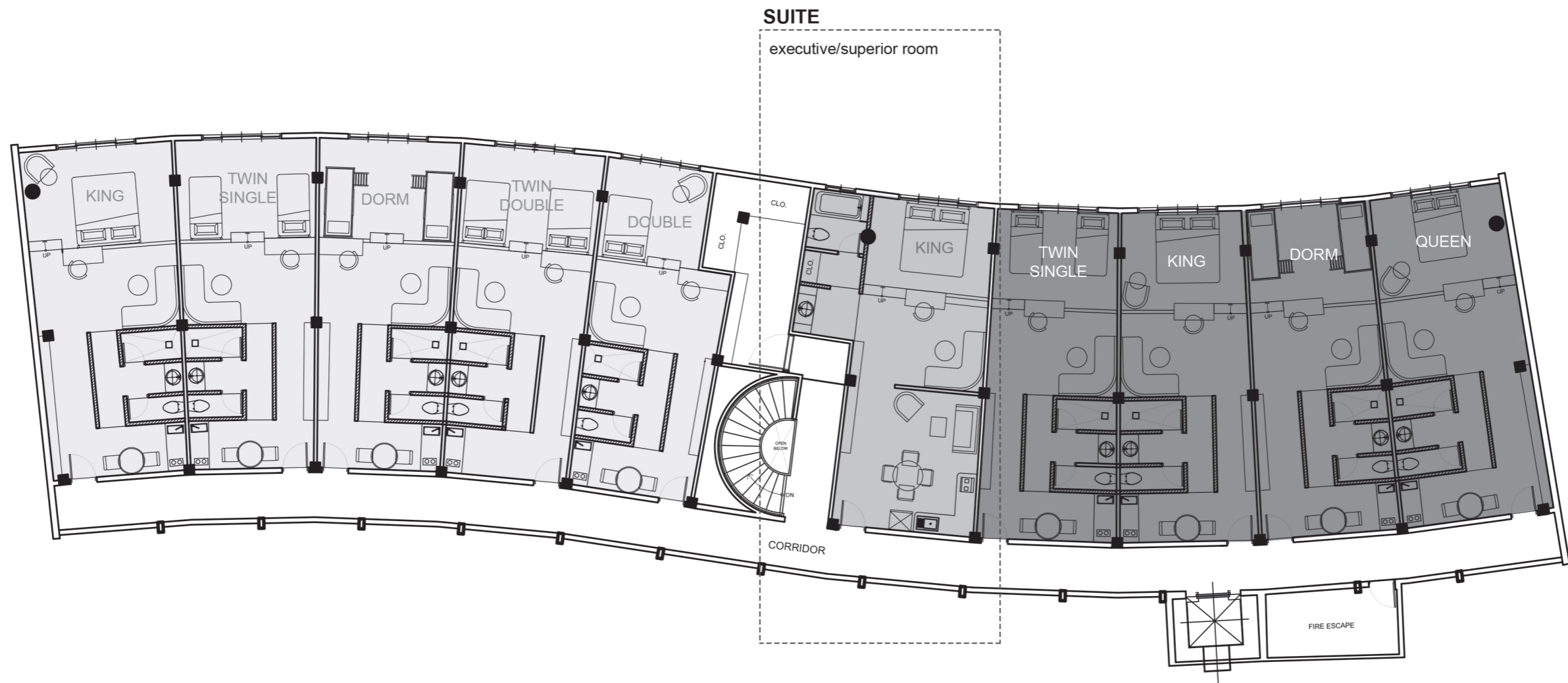
dorm-style

fiji
studio

15052019



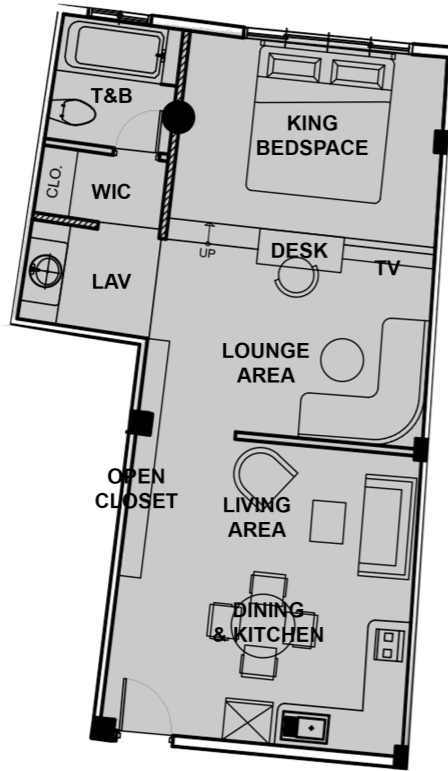
FOURTH FLOOR PLAN SUITE

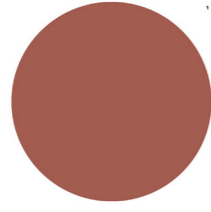
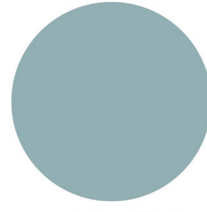
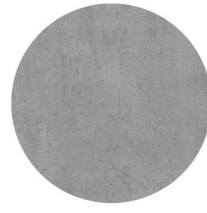
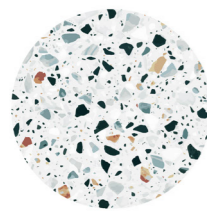


SCALE 1:150 M



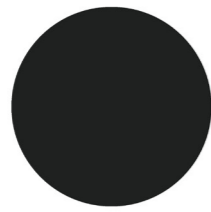
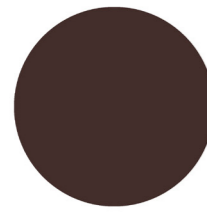
FLOOR PLAN SUITE





92afb3

a25c50



432e2b

1f2121

color & texture palette

The color palette for MTA is intended to complement the proposed branding scheme. The materials chosen exemplify the rawness of concrete and wood typical materials in vernacular and modern Filipino architecture, as well as the pieced-together aesthetic of boldly colored chunks of stone/tile and wood (terrazzo and wood parquet flooring).

The solid wall or accent colors exhibit a deeper pastel that is regal yet hints of adventure and fun warmth.





**greeting
shelf**

**floating sink with
cabinet**

glassblocks



**polished
concrete**

**terrazzo
flooring**

**wood, weaved, or solihiya
elements**



“no closed spaces”

**layered
elements
to highlight brick wall**



**curvilinear
nuances**

**fiji
studio**

15052019