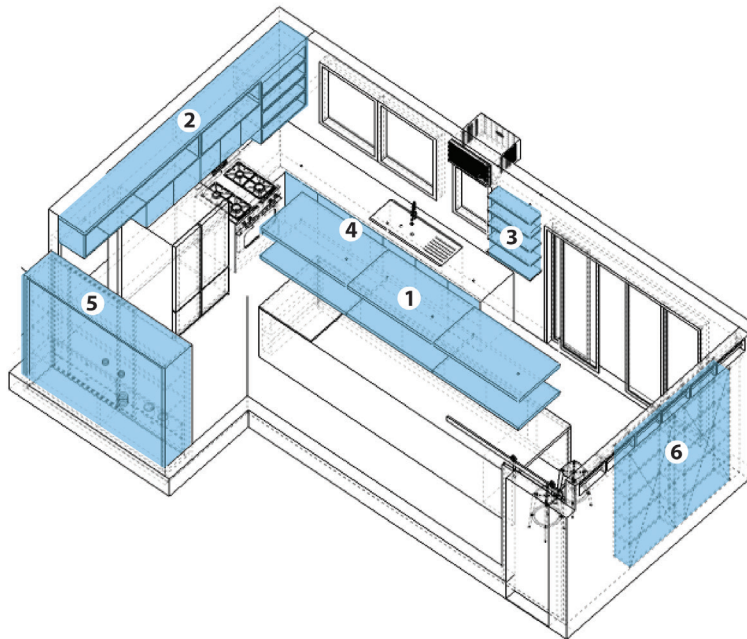


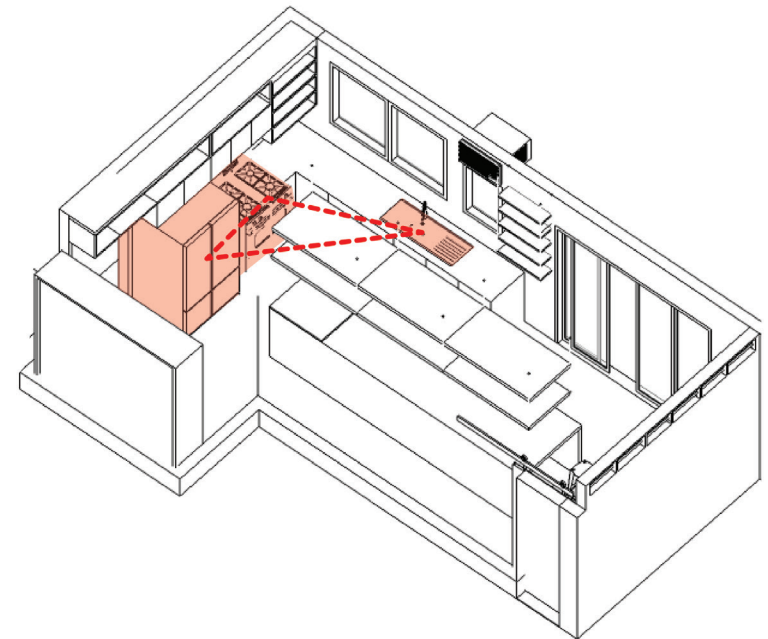
location: PASIG CITY, PH  
area: **24.58 sqm**

The design aims to transform an existing kitchen into something more ergonomic and effectively functional for a baker whose workspace needs are mainly that of **flexibility** and **ample storage**. Thus, with this open plan and newly placed island, the kitchen is more organized and offers the sensation of lightness, especially with its simplicity. Storage areas were adapted to the what was most recently added in the area. A new wall that separates the main kitchen from the helper's room, laundry, and dirty kitchen was added for privacy and security, yet was still given access via a sliding barn-style door.



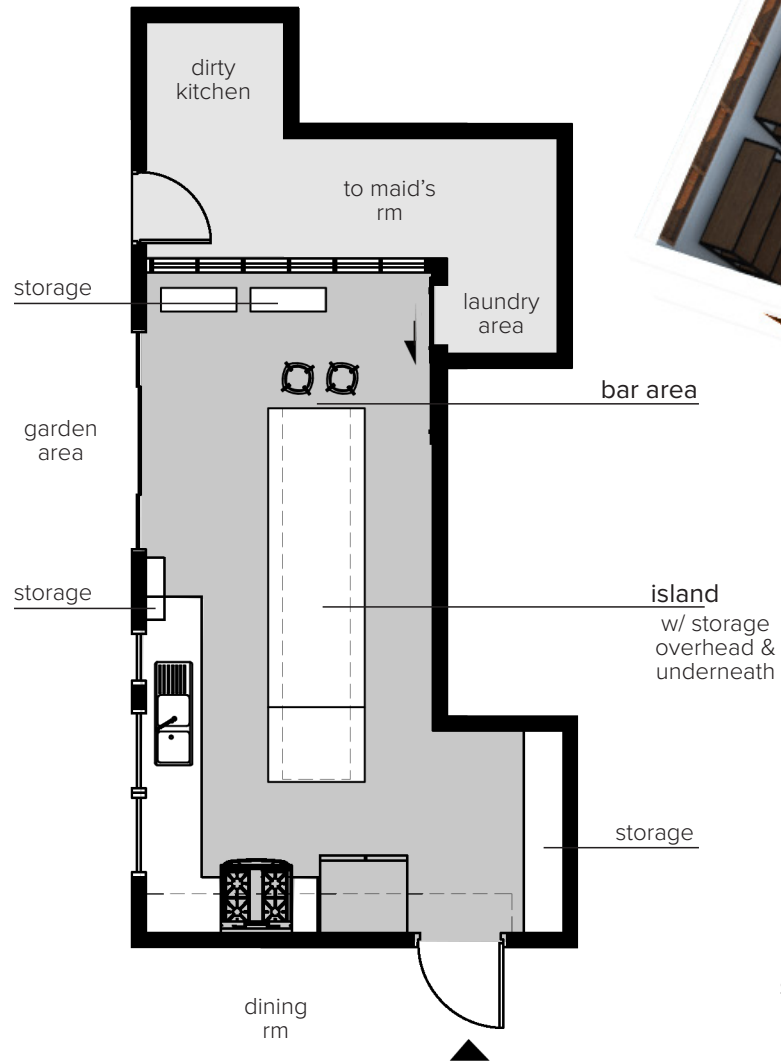
- 1 suspended over island
- 2 above refrigerator and range
- 3 beside sink
- 4 under sink
- 5 by door near dining room
- 6 by door near laundry

**new available storage space**

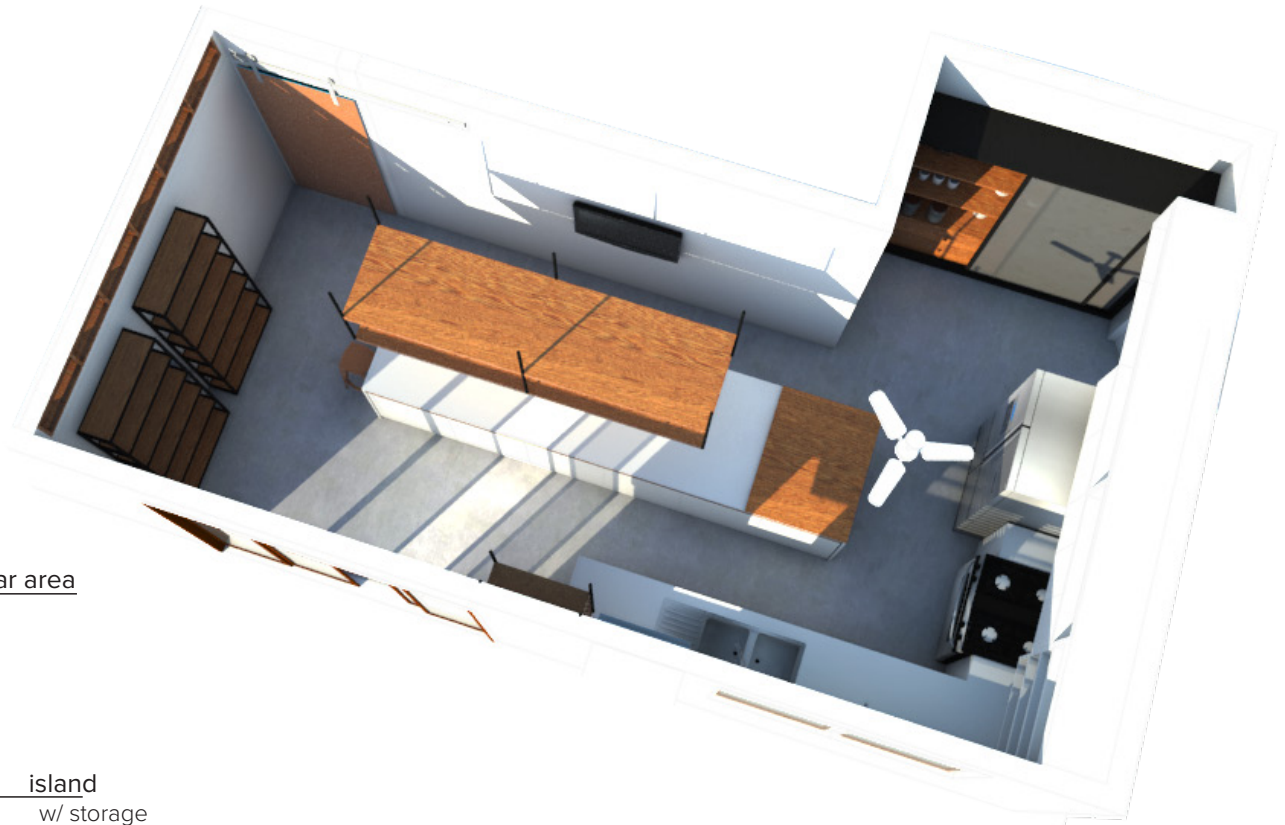


**the kitchen work triangle**

initial scheme and perspectives



**schematic floor plan**  
24.58 sqm



**3d floor plan**

The materials to be used in this project shall be limited to polished concrete, wood (recycled, if possible), steel, and synthetic for the counters. Other alternatives may be suggested as the project is pursued. All appliances shall be kept, unless client wishes to purchase new ones, in which case, must be consulted with the designers as it may affect the proposed schematics.



initial scheme and perspectives

