



baláy panimaláy

In the peri-urban community of Gines Nuevo, CAMELEON Association's Gines Farm holds a 40-60 sqm 'Community Center' which serves as a gathering space for various development activities by its constituents. Built and designed by a local craftsman, the structure by itself could be considered a local landmark and node. Although beautiful, the structure only features 1 activity area and needs better construction in order for it to last. The main objective now is to expand the activity area in order to serve multiple functions and further support CAMELEON Association Inc. in its mission to assist, educate, and provide sustainable futures to vulnerable community members and their families.

The design approach focuses on the following tenets:

- **ROOTED** with respect to context, vision, and foundation of structure
- **VERSATILITY** for maximizing functionality and featuring flexible spaces
- **OPEN SHELTER** to both the landscape and its users - providing both security and growth

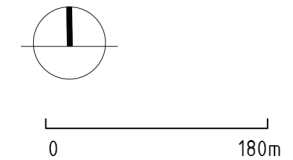
The spatial program of the Family House includes 2 main workshop areas for various activities --- which are also convertible to counselling rooms (both intimate and group)--- as well as a common kitchen and restrooms.

The masterplan mainly reintegrates the 2 existing structures (Storehouse and Piggery Barn) and the newly designed Family House / Balay Panimalay into the site as a multifunctional landscape that can provide sustainable livelihood, enrich social interactions between family and community members, as well as become the ultimate rural platform to truly facilitate health-related development programs that is progressive and nurturing.

For the Storehouse and the Piggery Barn buildings must be fully assessed by Engineers before reconstruction, although it is recommended that these existing structures be retained and rehabilitated with a focus on roofing, leaks, and painting.

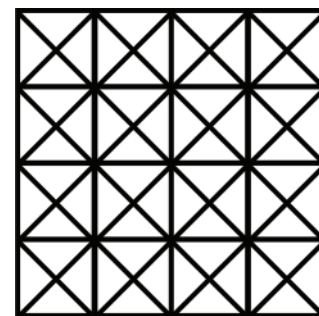
SITE LOCATION

Cabugao-Viejo-Gines-Quinolpan Road
Gines Nuevo, SAN ENRIQUE, ILOILO PH

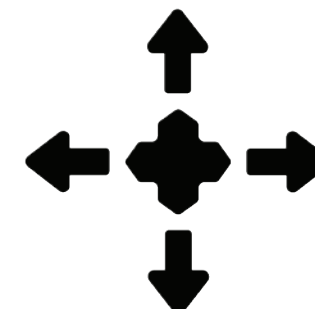


LOT AREA 1.4 HECTARES

design approach



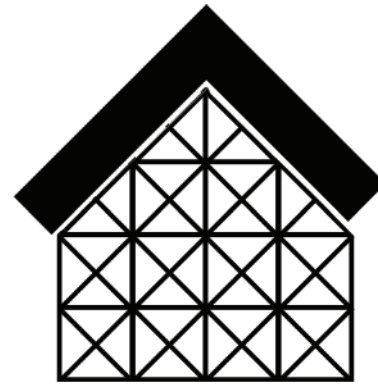
ROOTED



VERSATILE



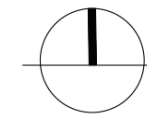
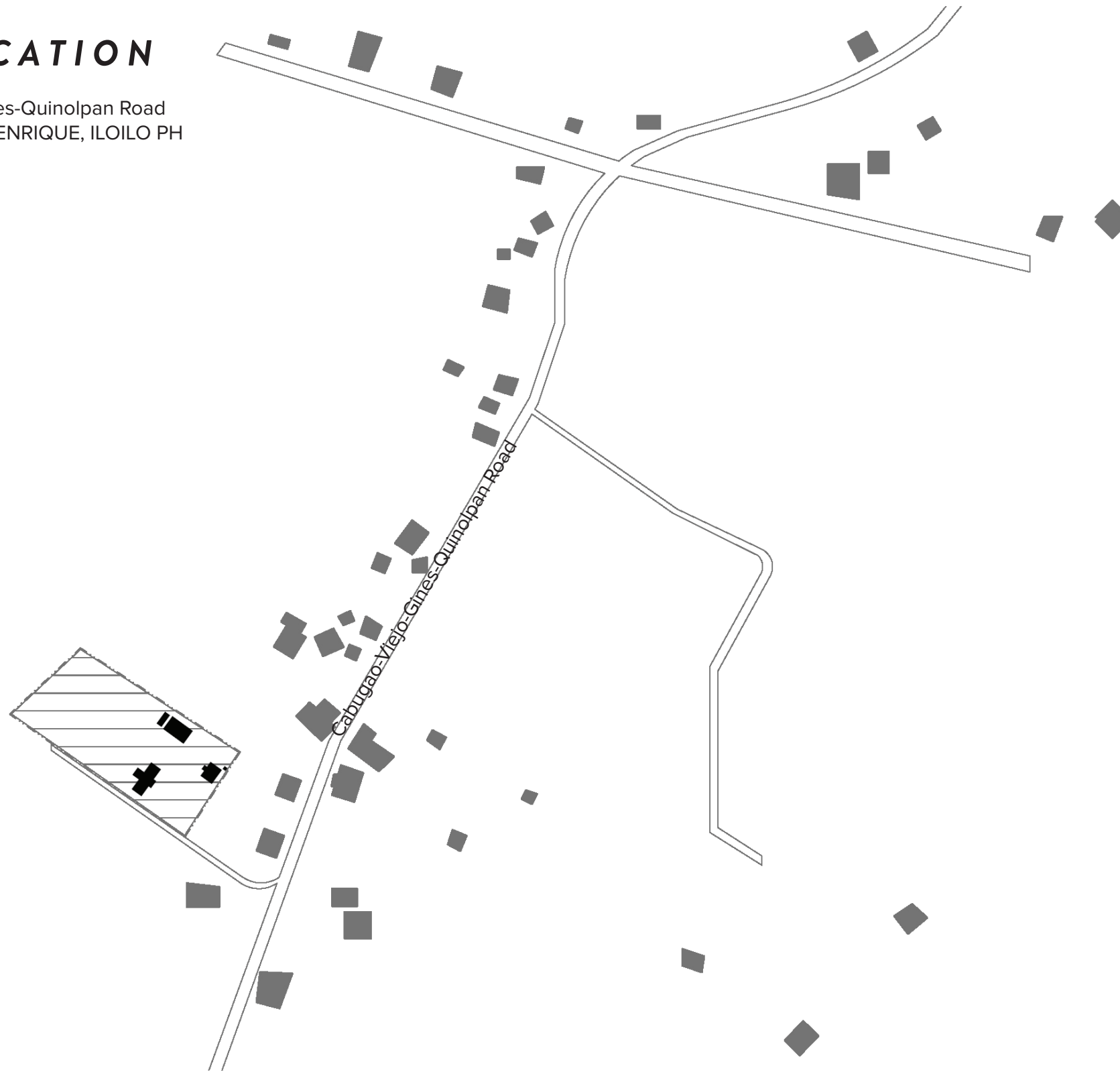
OPEN



baláy panimaláy

SITE LOCATION

Cabugao-Viejo-Gines-Quinolpan Road
Gines Nuevo, SAN ENRIQUE, ILOILO PH



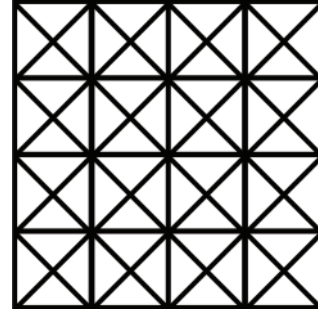
0 180m

LOT AREA 1.4 HECTARES

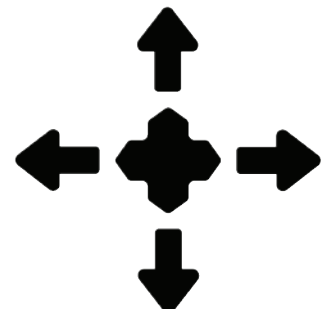








rooted



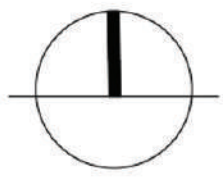
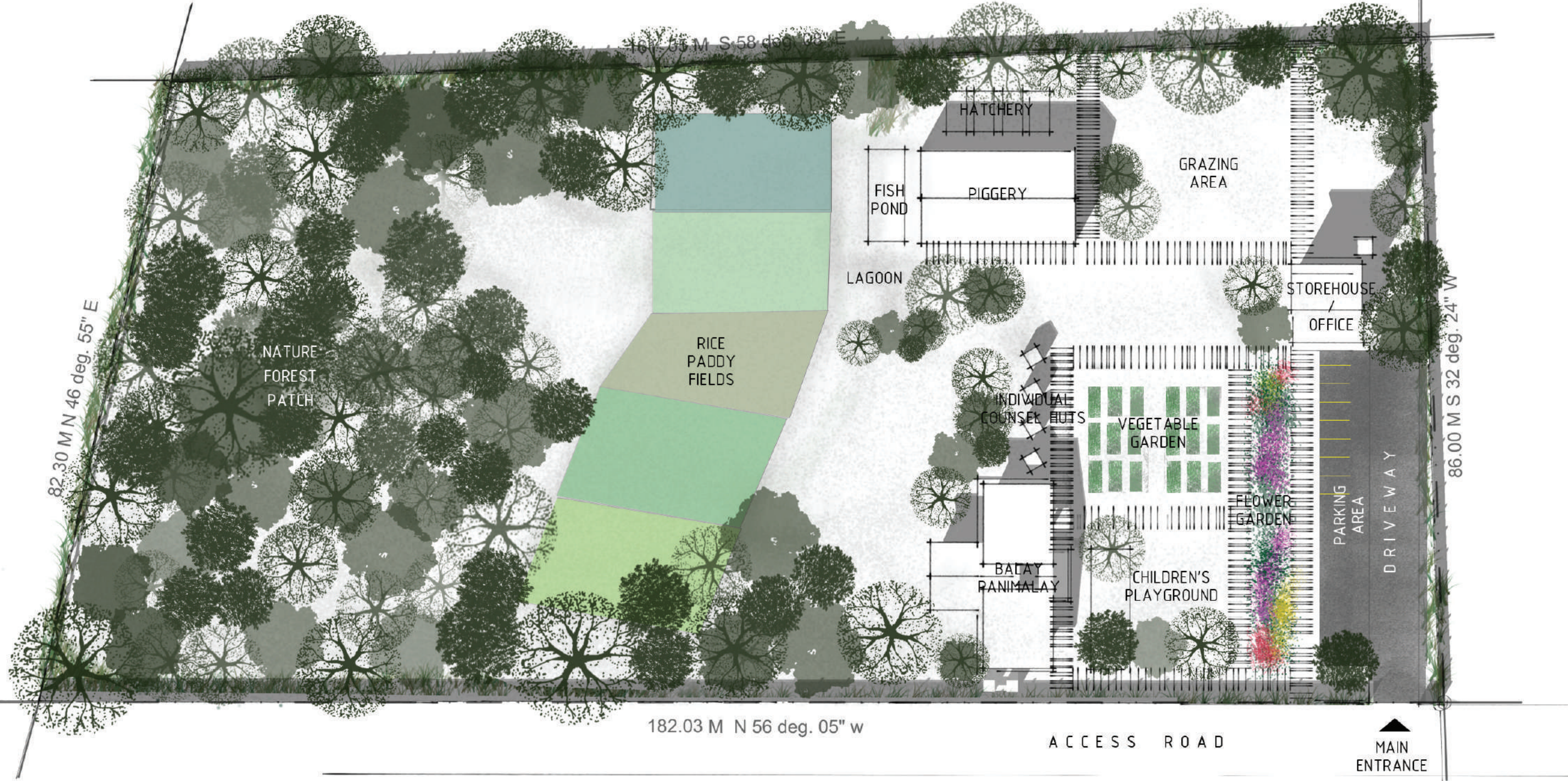
versatile



open shelter

THE GINES FARM

SITE DEVELOPMENT PLAN

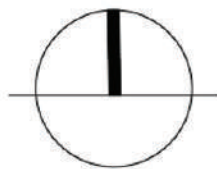
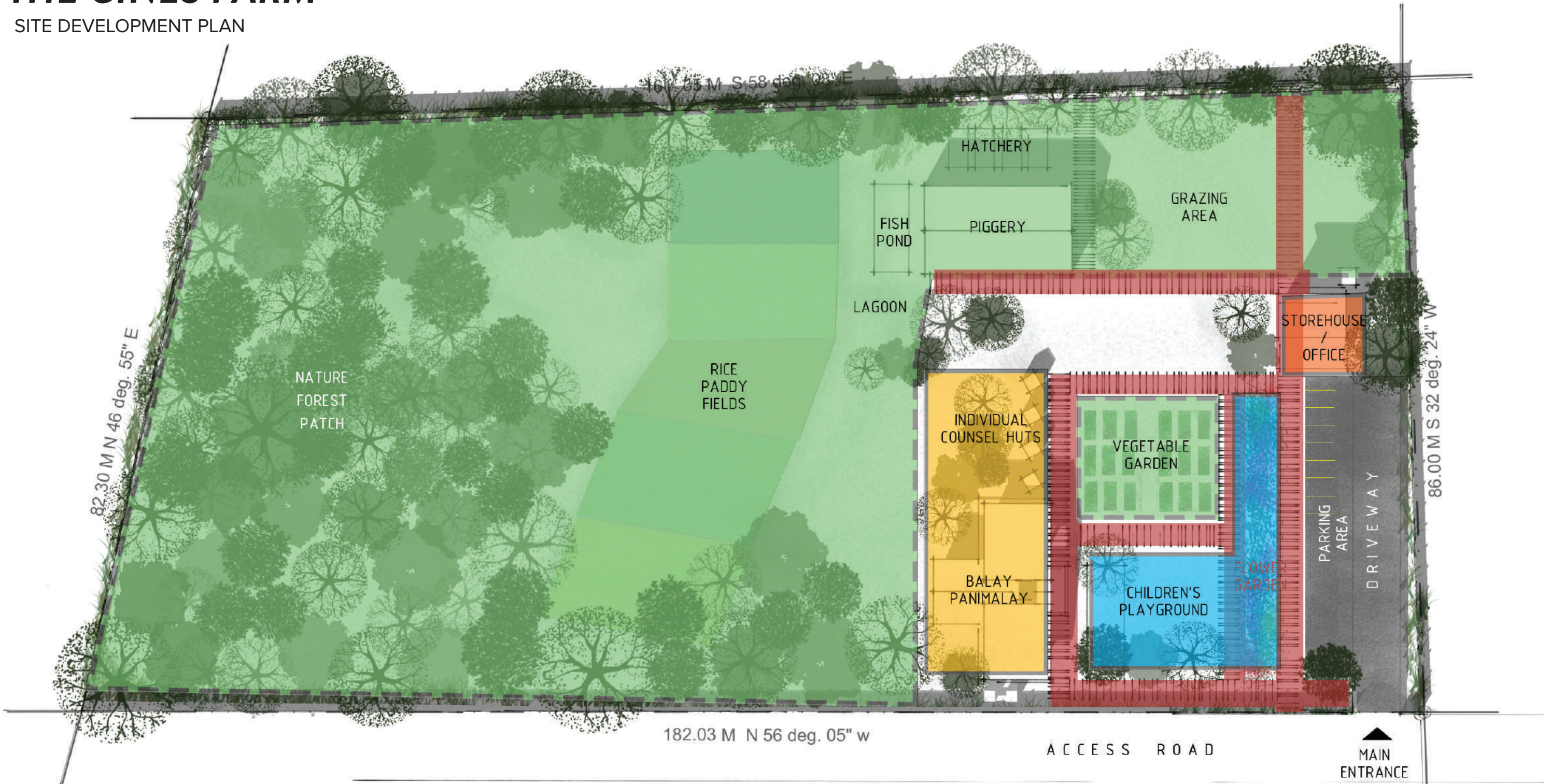


USER PROFILES

	IMMEDIATE COMMUNITY MEMBERS		VISITORS
	CAMELEON EMPLOYEES / VOLUNTEERS		FARM ANIMALS
	FAMILIES - CHILDREN, ELDERLY		

THE GINES FARM

SITE DEVELOPMENT PLAN

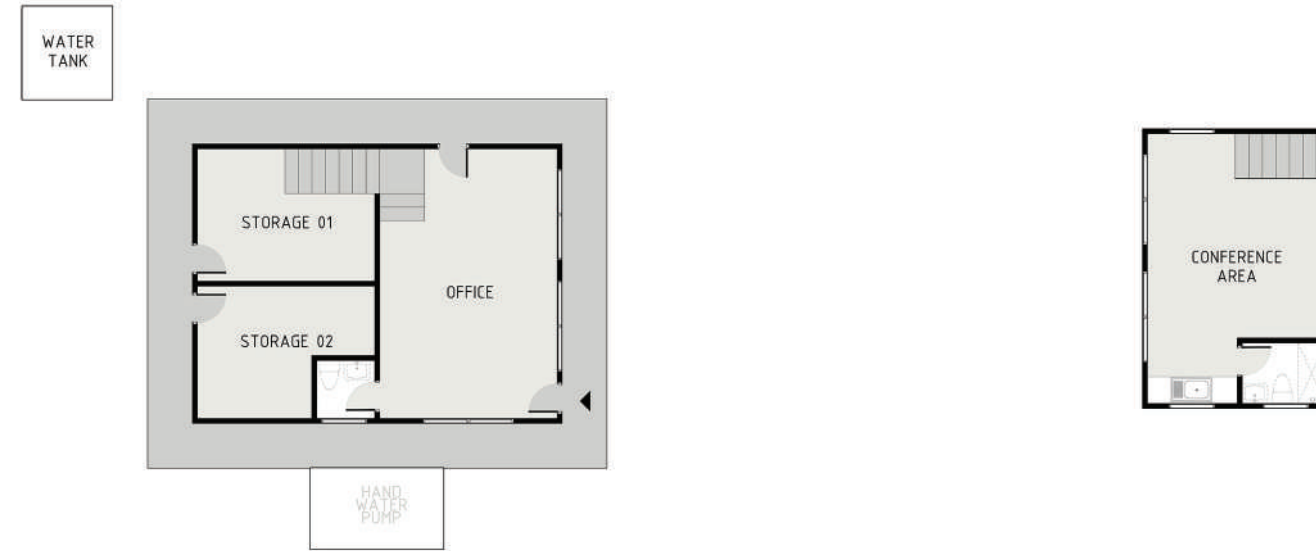


ZONING & CIRCULATION

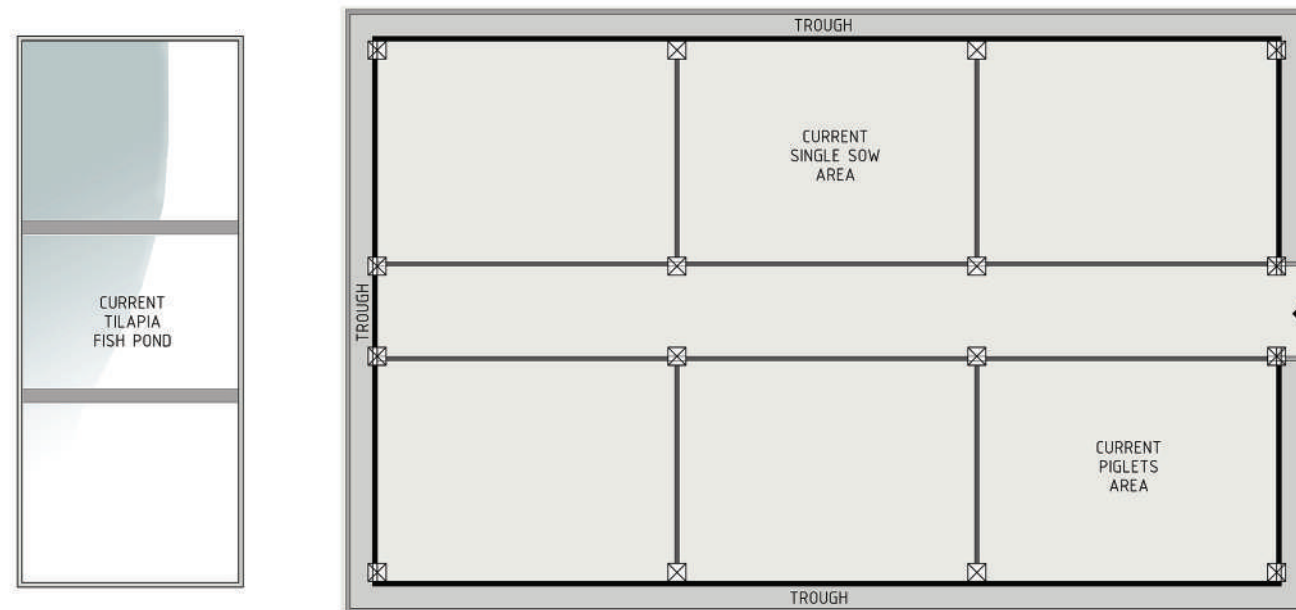
	LIVELIHOOD / FARMING ACTIVITIES
	TRAINING / WORKSHOP ACTIVITIES
	ADMINISTRATIVE
	RECREATIONAL
	CIRCULATION

existing structures

STOREHOUSE PROPOSED FLOOR PLAN SCALE: 1:75M



PIGGERY / BARN FLOOR PLAN SCALE: 1:75M



existing structures

STOREHOUSE



existing structures

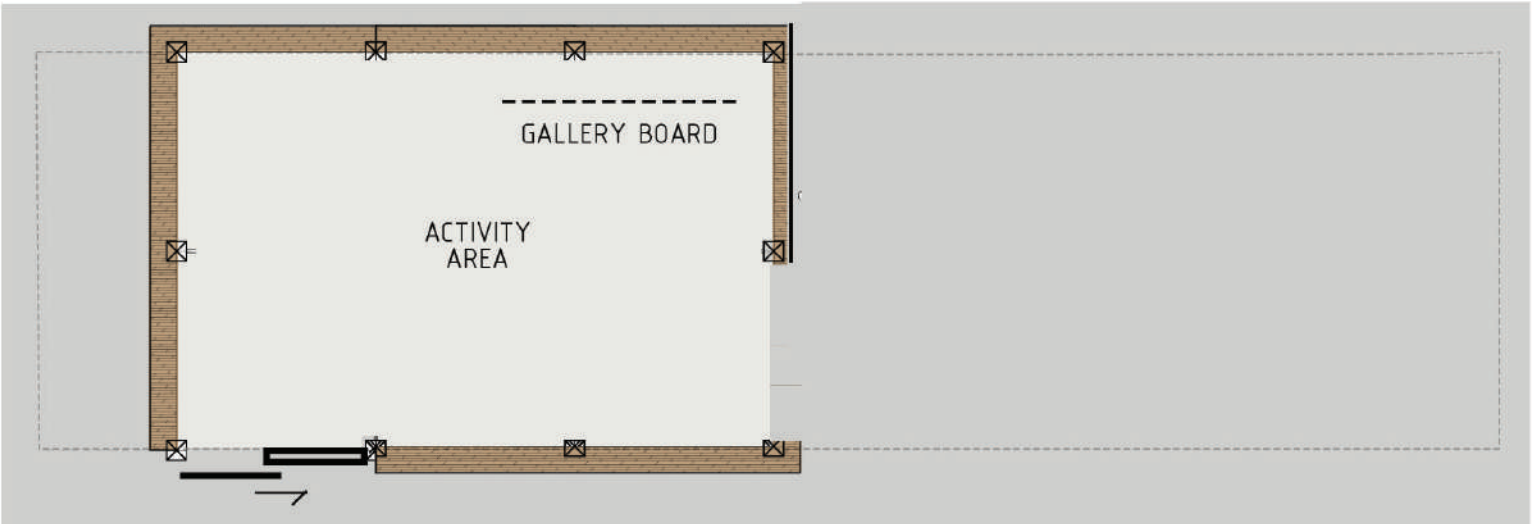
PIGGERY / BARN



the baláy

EXISTING

FLOOR PLAN
SCALE: 1:75M



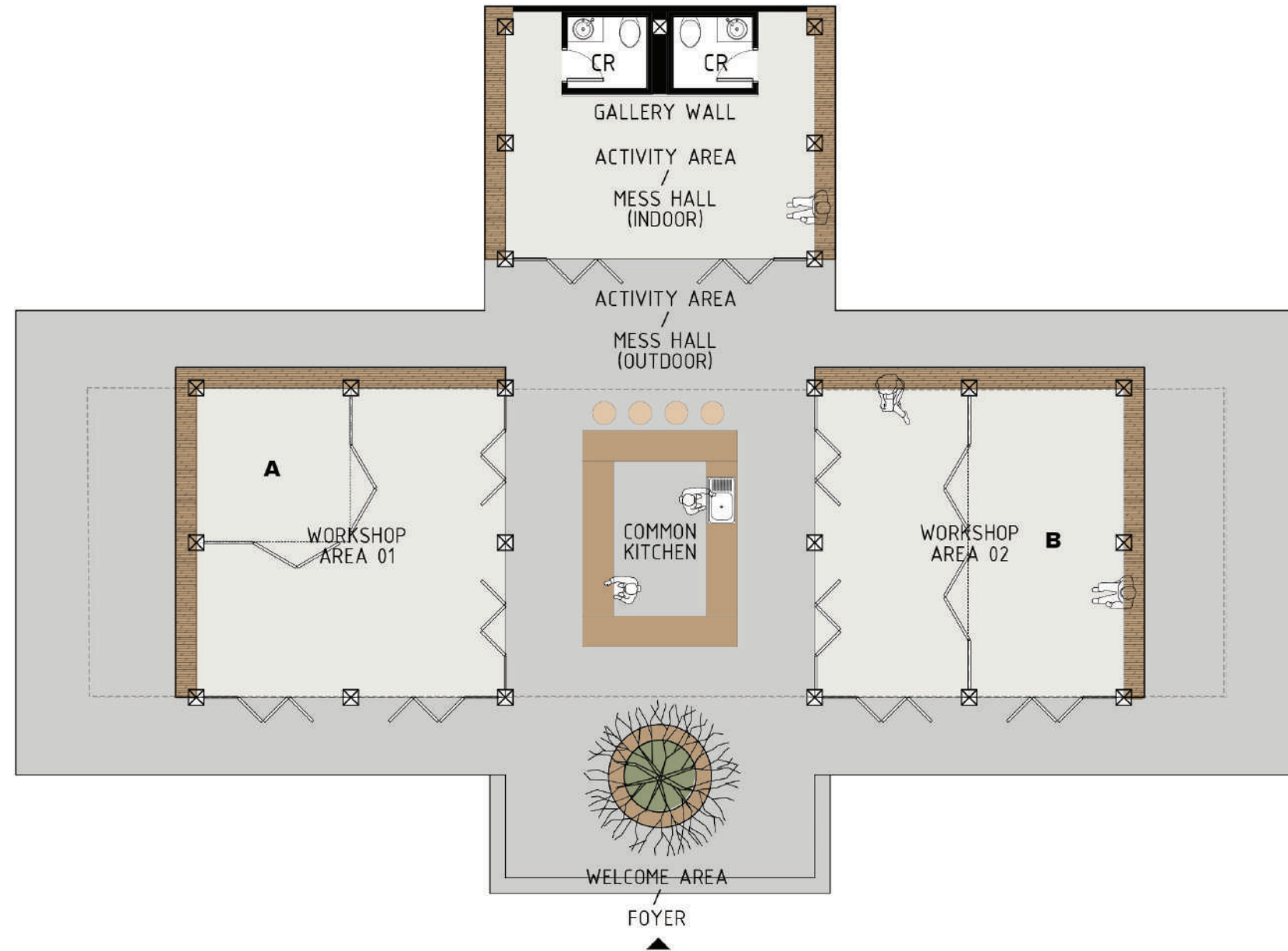
the baláy

EXISTING



the baláy

SCHEME 01

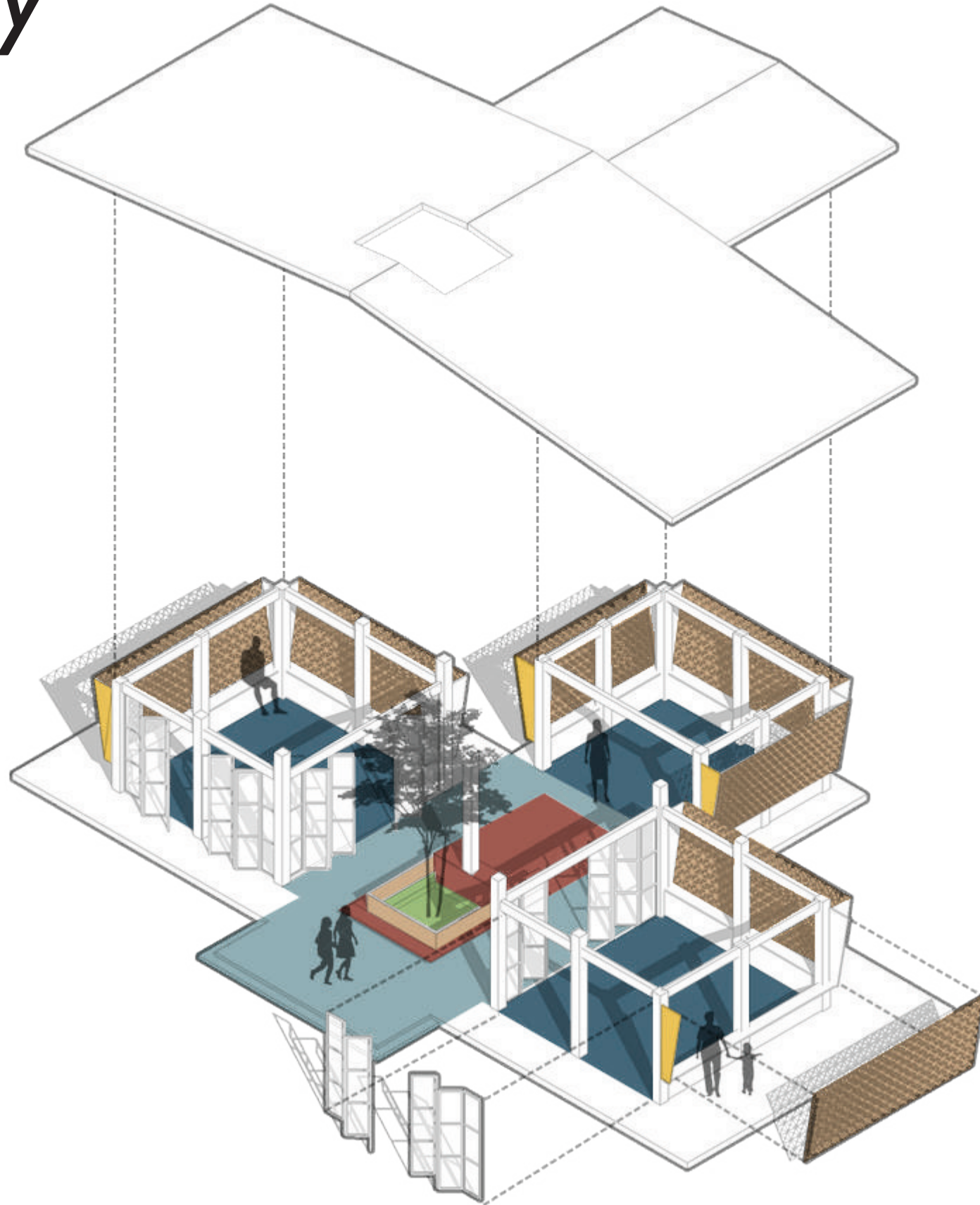


LEGEND

- A** COUNSELLING ROOM
- B** GROUP COUNSELLING ROOM

the baláy

SCHEME 01

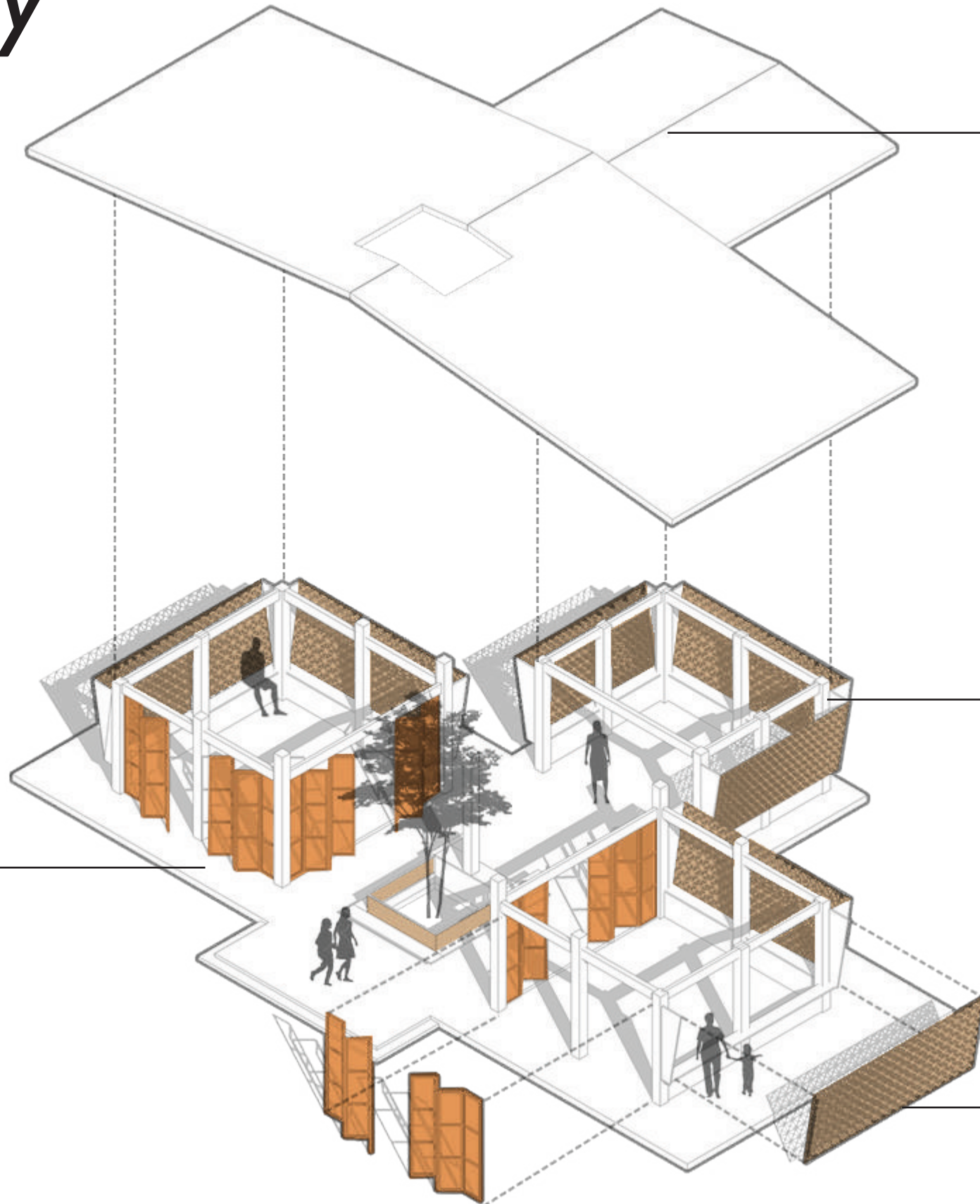


SPATIAL PROGRAMMING

- COMMON KITCHEN
- MAIN ACTIVITY SPACES
- WELCOME FOYER
- COURTYARD
- GALLERY WALLS

the baláy

SCHEME 01



GABLE ROOF(METAL SHEET ROOFING) w. INSULATION

STRUCTURAL ISOMETRIC

BIFOLD DOOR PANELS
(SOLID WOOD w/ BAMBOO)

TREATED TIMBER FRAMING
(COLUMNS, BEAMS)

SHALLOW CONCRETE FOUNDATIONS & FLOOR SLAB

TREATED BAMBOO PATTERN VENTILATION/ SECURITY FRAMES OVER BUILT-IN BAMBOO SEATING

the baláy

SCHEME 01



the baláy

SCHEME 01



the baláy

SCHEME 01



the baláy

SCHEME 01



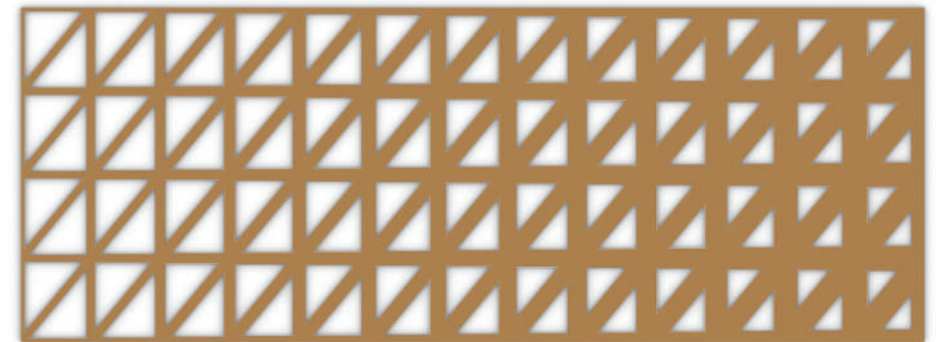
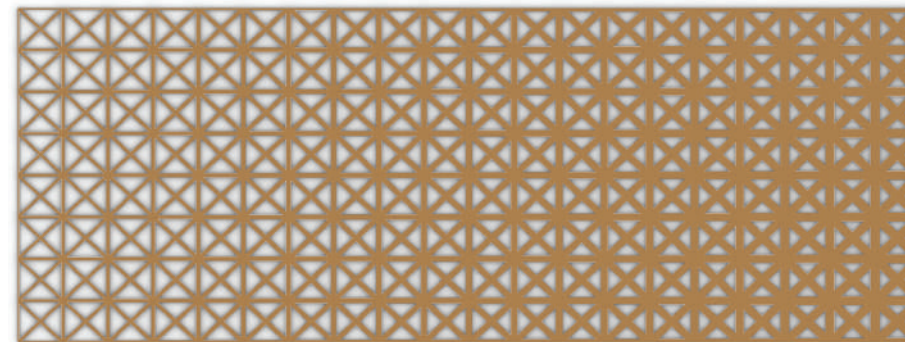
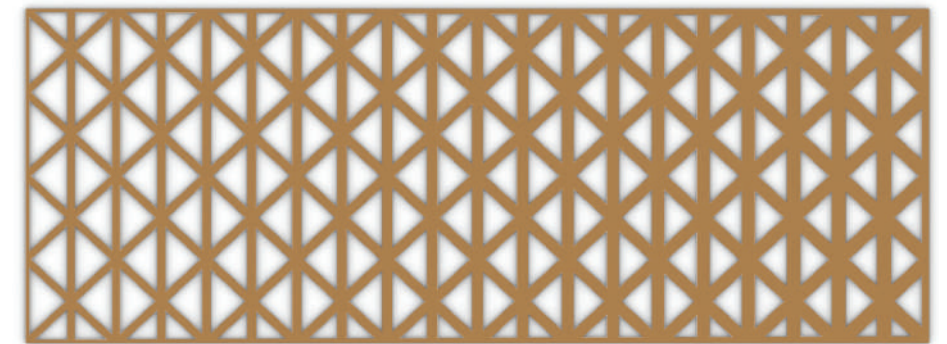
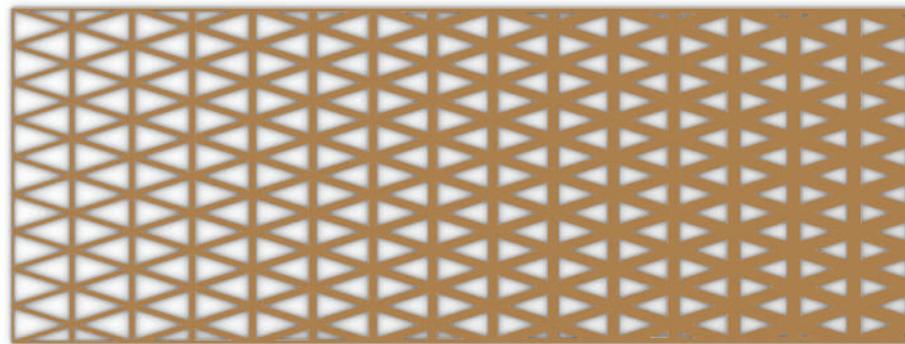
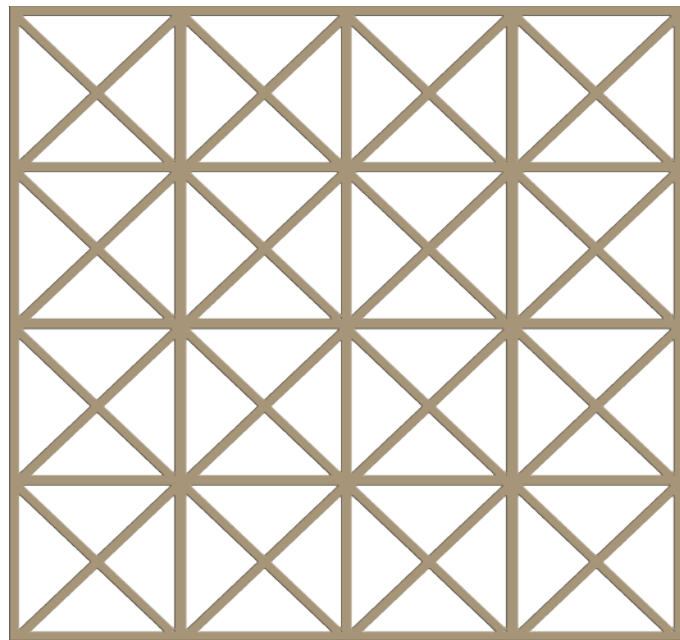
the baláy

SCHEME 01



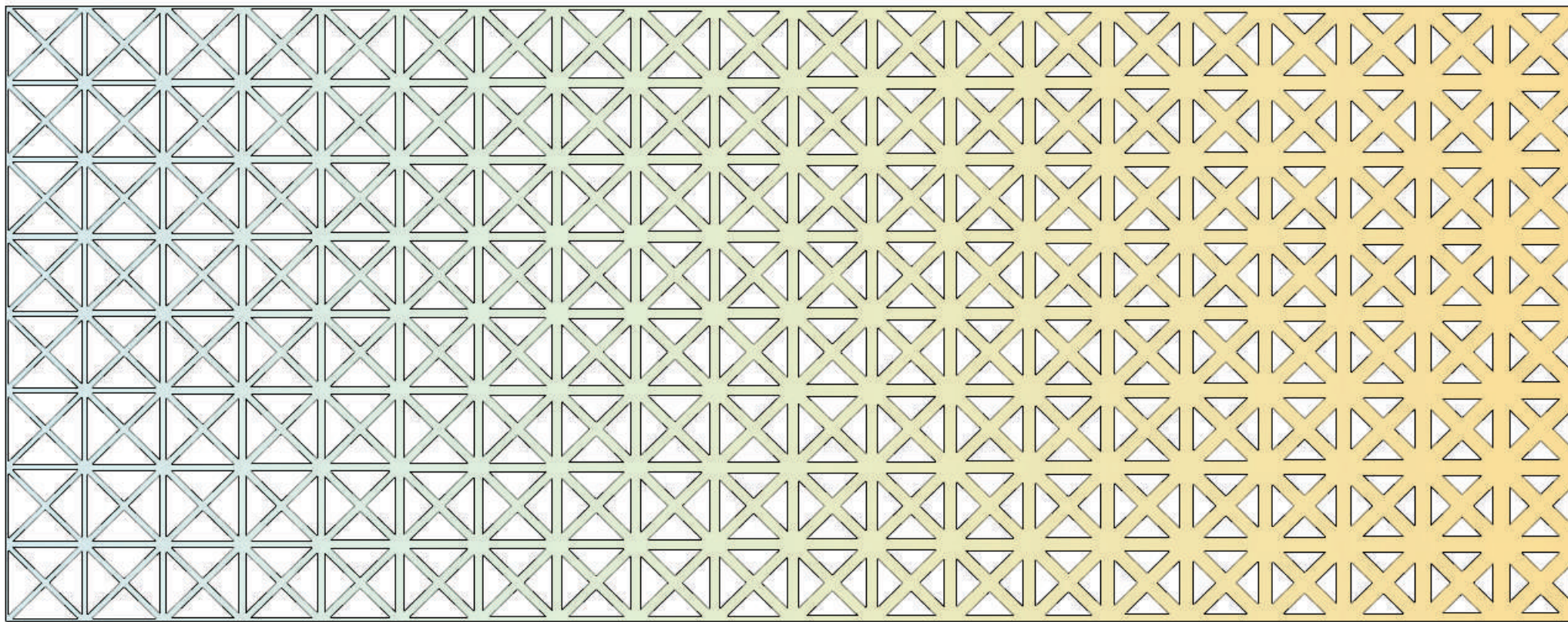
the baláy

THE PATTERN



the baláy

THE PATTERN



LEAST PRIVACY

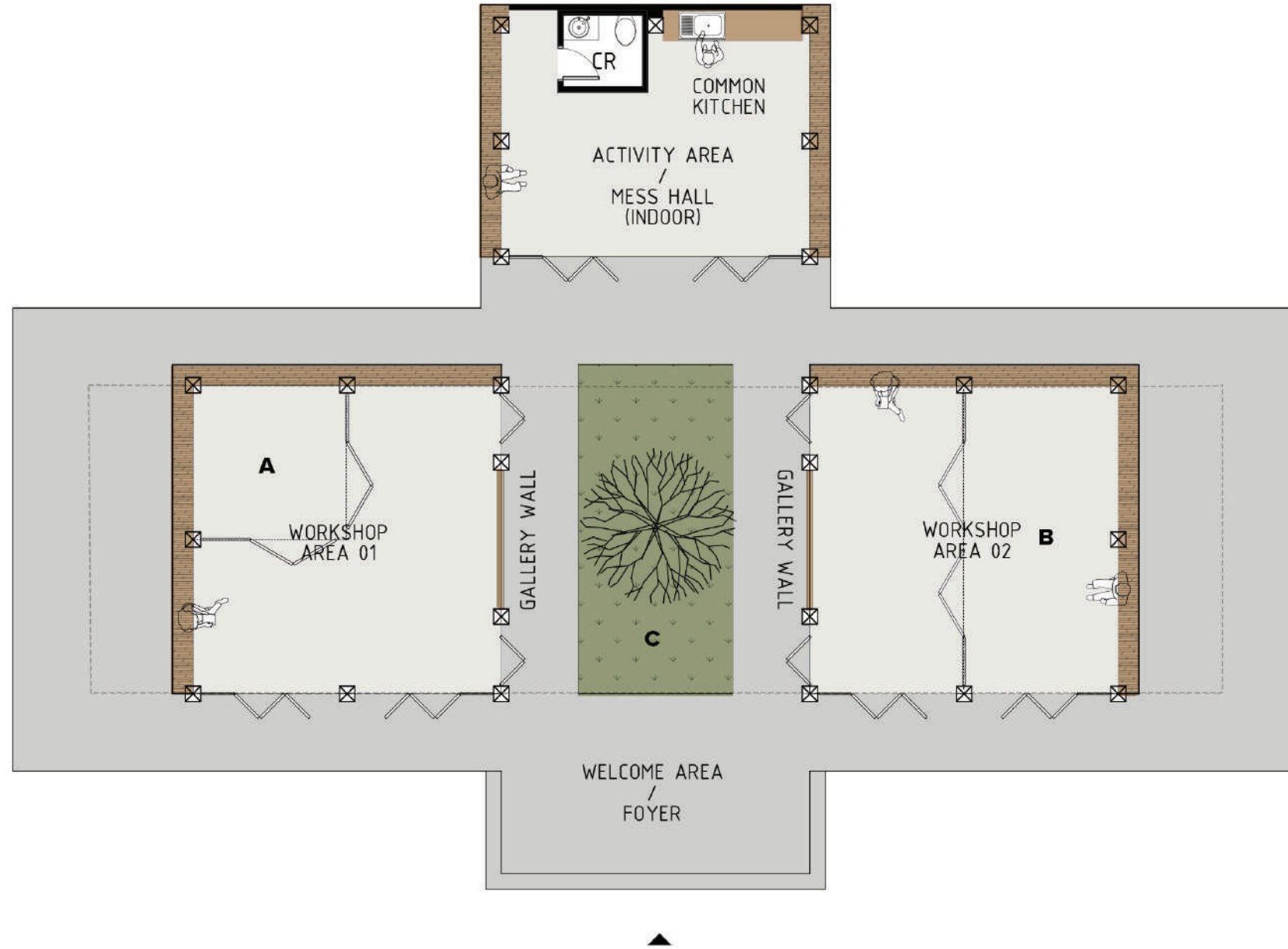
MOST PRIVACY



BAMBOO STRIP WIDTH

the baláy

SCHEME 02

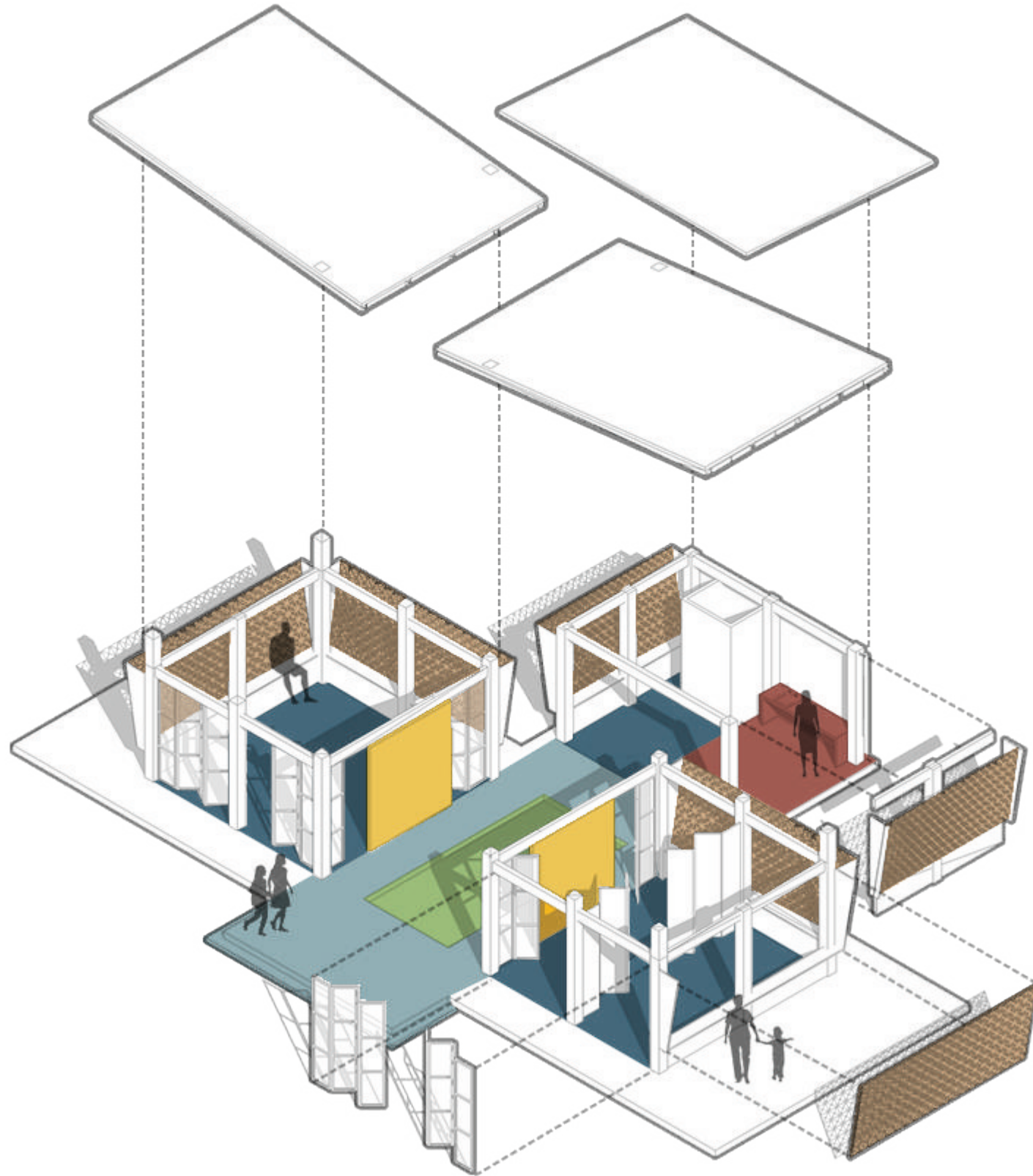


LEGEND

- A** COUNSELLING ROOM
- B** GROUP COUNSELLING ROOM
- C** COURTYARD

the baláy

SCHEME 02

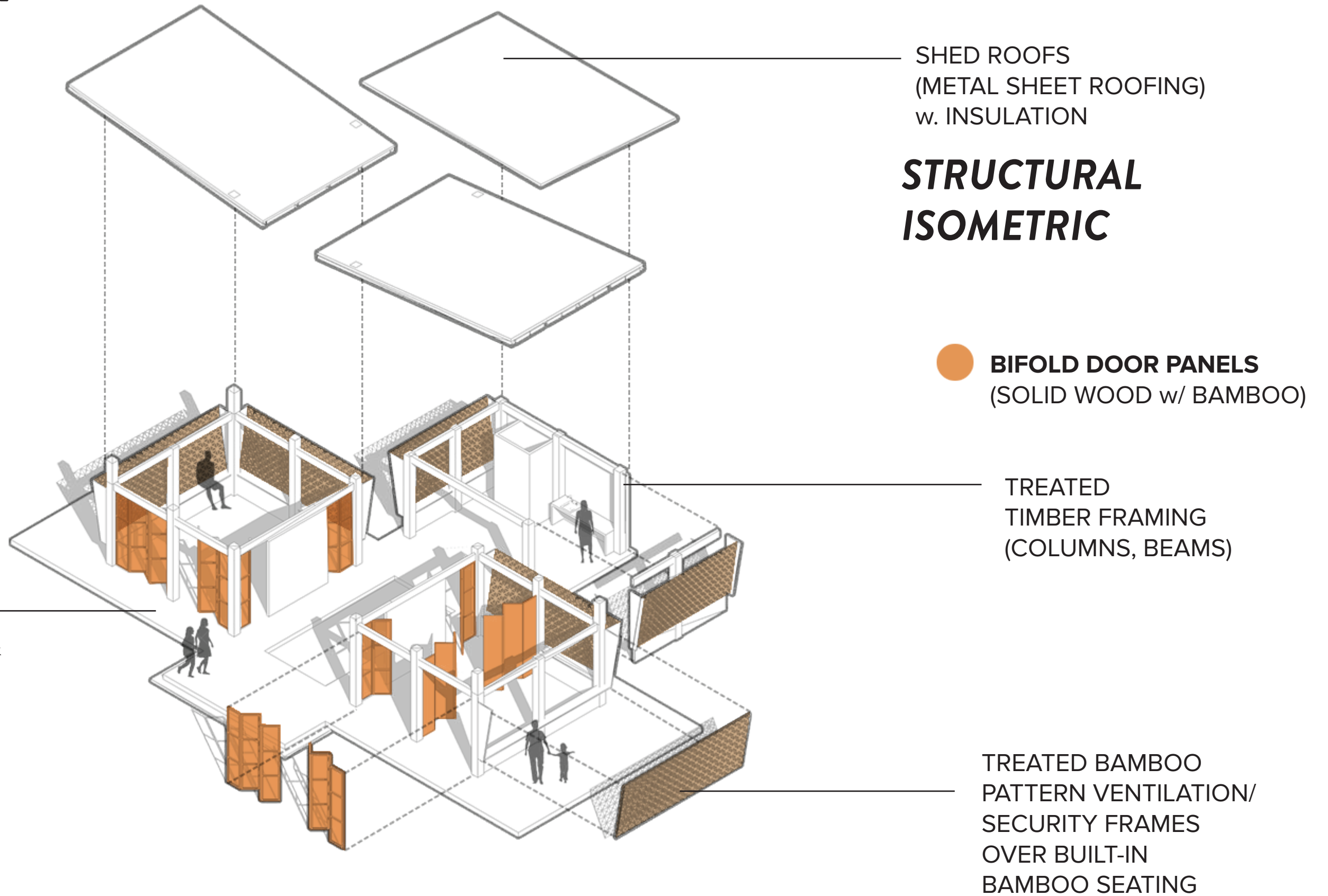


SPATIAL PROGRAMMING

- COMMON KITCHEN
- MAIN ACTIVITY SPACES
- WELCOME FOYER
- COURTYARD
- GALLERY WALLS

the baláy

SCHEME 02



the baláy

SCHEME 02



the baláy

SCHEME 02



the baláy

SCHEME 02



the baláy

SCHEME 02



the baláy

SCHEME 02



the baláy

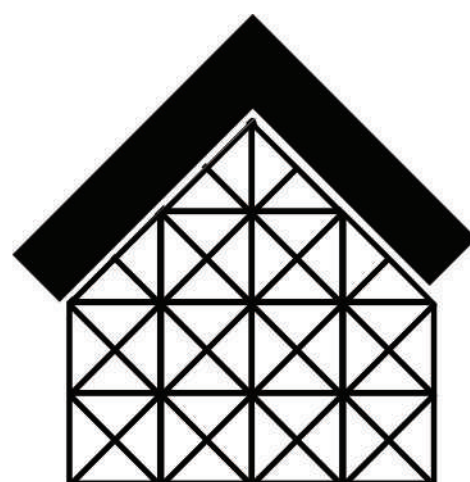
SCHEME 02



by design,

the structure by itself becomes a platform for security and growth -- as if a guardian -- as well as invites a community offering livelihood opportunities that become ecosystem services and, ultimately, human values;

human values that determine sustainable futures.



“to protect and make (known) one’s own”

- tagbaláy spirit